

MARVEL

# ANT-MAN

© 2015 MARVEL 

IN THEATERS JULY 17



# ACTIVITY PACK & COLORING SHEET

PG-13

© 2015 MARVEL 

# MARVEL ANT-MAN

© 2015 MARVEL



## IN THEATERS JULY 17

Scissors icon at the top center of the card grid.

<p>ANT-MAN</p> <p>MARVEL <b>ANT-MAN</b></p> <p>IN THEATERS JULY 17</p> <p>© 2015 MARVEL</p>	<p>DARREN CROSS</p> <p>MARVEL <b>ANT-MAN</b></p> <p>IN THEATERS JULY 17</p> <p>© 2015 MARVEL</p>	<p>HANK PYM</p> <p>MARVEL <b>ANT-MAN</b></p> <p>IN THEATERS JULY 17</p> <p>© 2015 MARVEL</p>
<p>ANT-MAN</p> <p>MARVEL <b>ANT-MAN</b></p> <p>IN THEATERS JULY 17</p> <p>© 2015 MARVEL</p>	<p>DARREN CROSS</p> <p>MARVEL <b>ANT-MAN</b></p> <p>IN THEATERS JULY 17</p> <p>© 2015 MARVEL</p>	<p>HANK PYM</p> <p>MARVEL <b>ANT-MAN</b></p> <p>IN THEATERS JULY 17</p> <p>© 2015 MARVEL</p>

Scissors icon at the bottom center of the card grid.

PG-13

### MATCHING PAIRS GAME

© 2015 MARVEL

# MARVEL ANT-MAN

© 2015 MARVEL



## IN THEATERS JULY 17

Scissors icon at top center and bottom right of the card grid.

<p>HOPE VAN DYNE</p> <p>MARVEL <b>ANT-MAN</b> IN THEATERS JULY 17</p> <p>© 2015 MARVEL</p>	<p>LUIS</p> <p>MARVEL <b>ANT-MAN</b> IN THEATERS JULY 17</p> <p>© 2015 MARVEL</p>	<p>PAXTON</p> <p>MARVEL <b>ANT-MAN</b> IN THEATERS JULY 17</p> <p>© 2015 MARVEL</p>
<p>HOPE VAN DYNE</p> <p>MARVEL <b>ANT-MAN</b> IN THEATERS JULY 17</p> <p>© 2015 MARVEL</p>	<p>LUIS</p> <p>MARVEL <b>ANT-MAN</b> IN THEATERS JULY 17</p> <p>© 2015 MARVEL</p>	<p>PAXTON</p> <p>MARVEL <b>ANT-MAN</b> IN THEATERS JULY 17</p> <p>© 2015 MARVEL</p>

PG-13

### MATCHING PAIRS GAME

© 2015 MARVEL

# MARVEL ANT-MAN

© 2015 MARVEL



## IN THEATERS JULY 17

Scissors icon at top center of the first row.


Scissors icon at bottom center of the second row.

PG-13

### MATCHING PAIRS GAME

© 2015 MARVEL

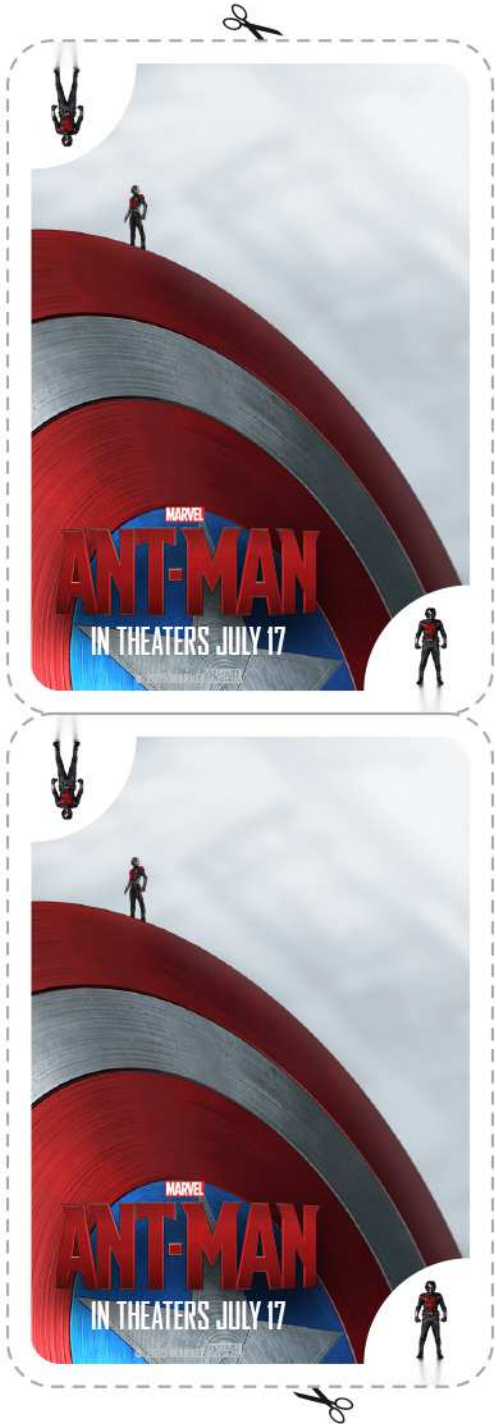
MARVEL  
**ANT-MAN**  
© 2015 MARVEL MARVEL



IN THEATERS JULY 17

# INSTRUCTIONS

- ▶ Have an adult carefully cut out each card.
- ▶ Mix up the cards and lay them in rows, face down.
- ▶ Set your timer and start the game.
- ▶ Turn over any two cards, if the two cards match, keep them, if they don't match, turn them back over and remember what was on each card.
- ▶ The game is over when all the cards have been matched.
- ▶ The player that matches all the pairs in the quickest time wins.

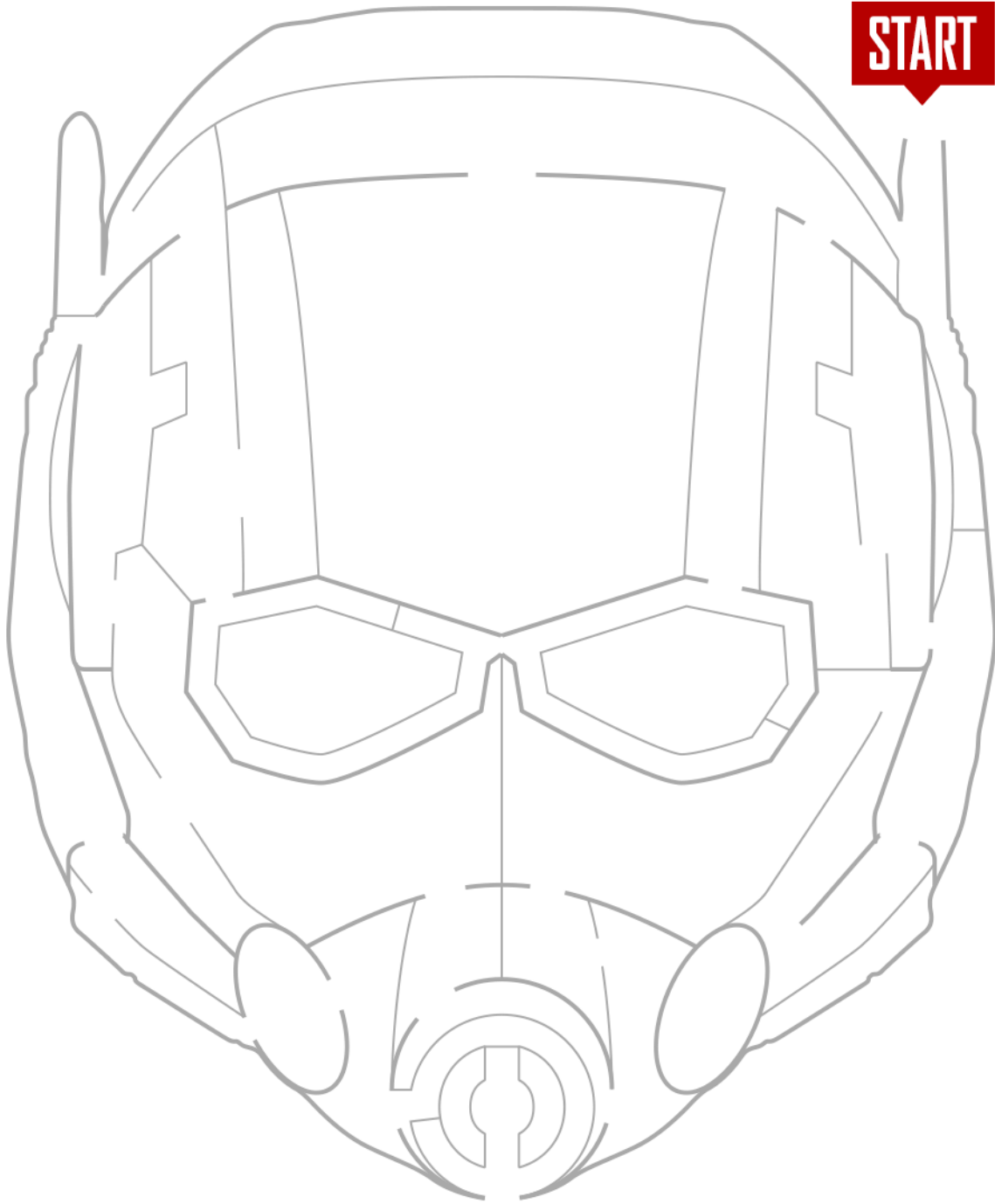


MARVEL  
**ANT-MAN**

© 2015 MARVEL MARVEL



IN THEATERS JULY 17



**START**

**FINISH**

PG-13

MAZE

© 2015 MARVEL MARVEL

MARVEL  
**ANT-MAN**

© 2015 MARVEL MARVEL



IN THEATERS JULY 17



▶ Have an adult carefully cut out the mask and the circles marked with crosses.

▶ Tie a length of string through each hole.

PG-13

MASK

© 2015 MARVEL MARVEL

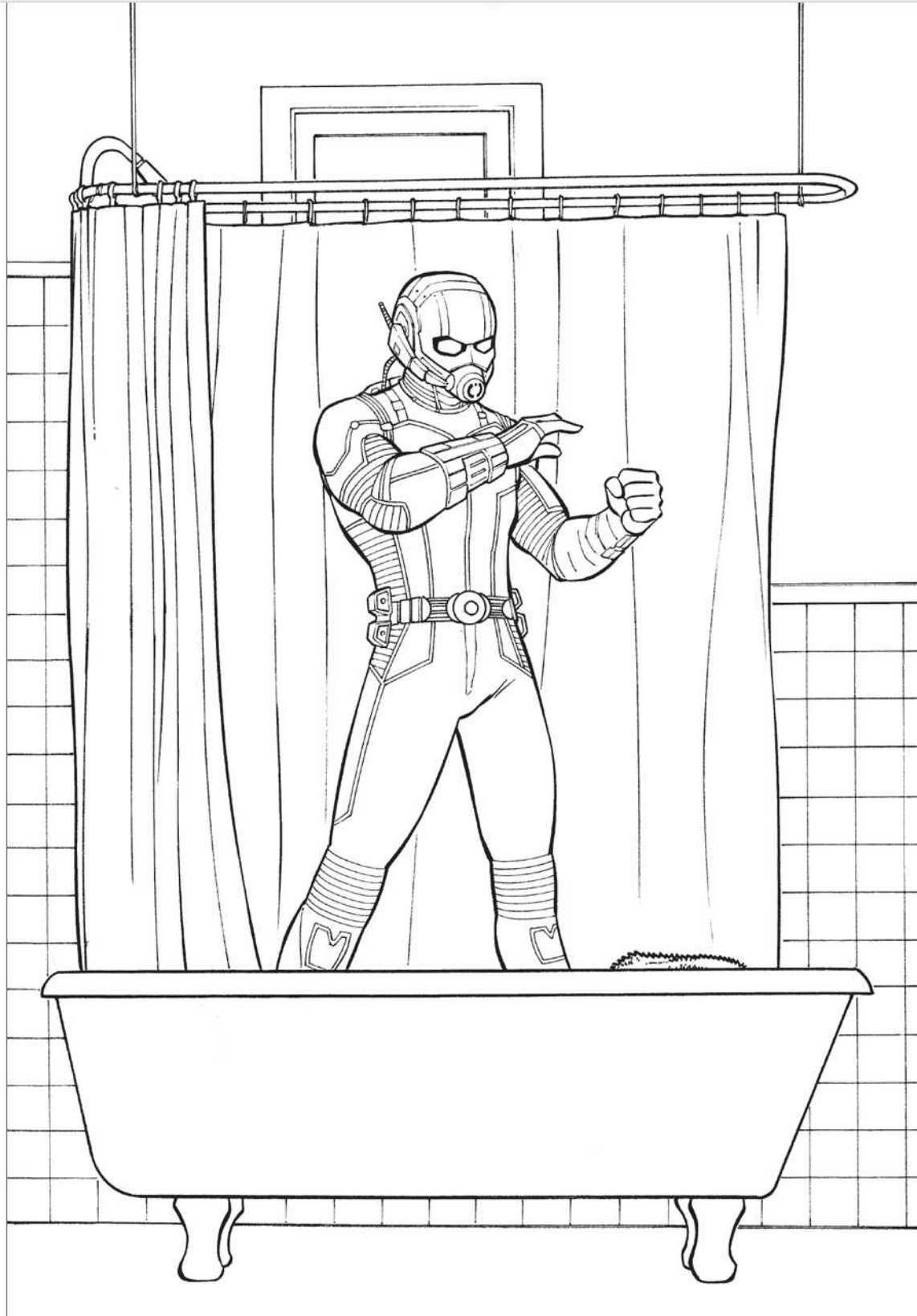
MARVEL

# ANT-MAN

© 2015 MARVEL



IN THEATERS JULY 17



PG-13

COLORING ACTIVITY

© 2015 MARVEL



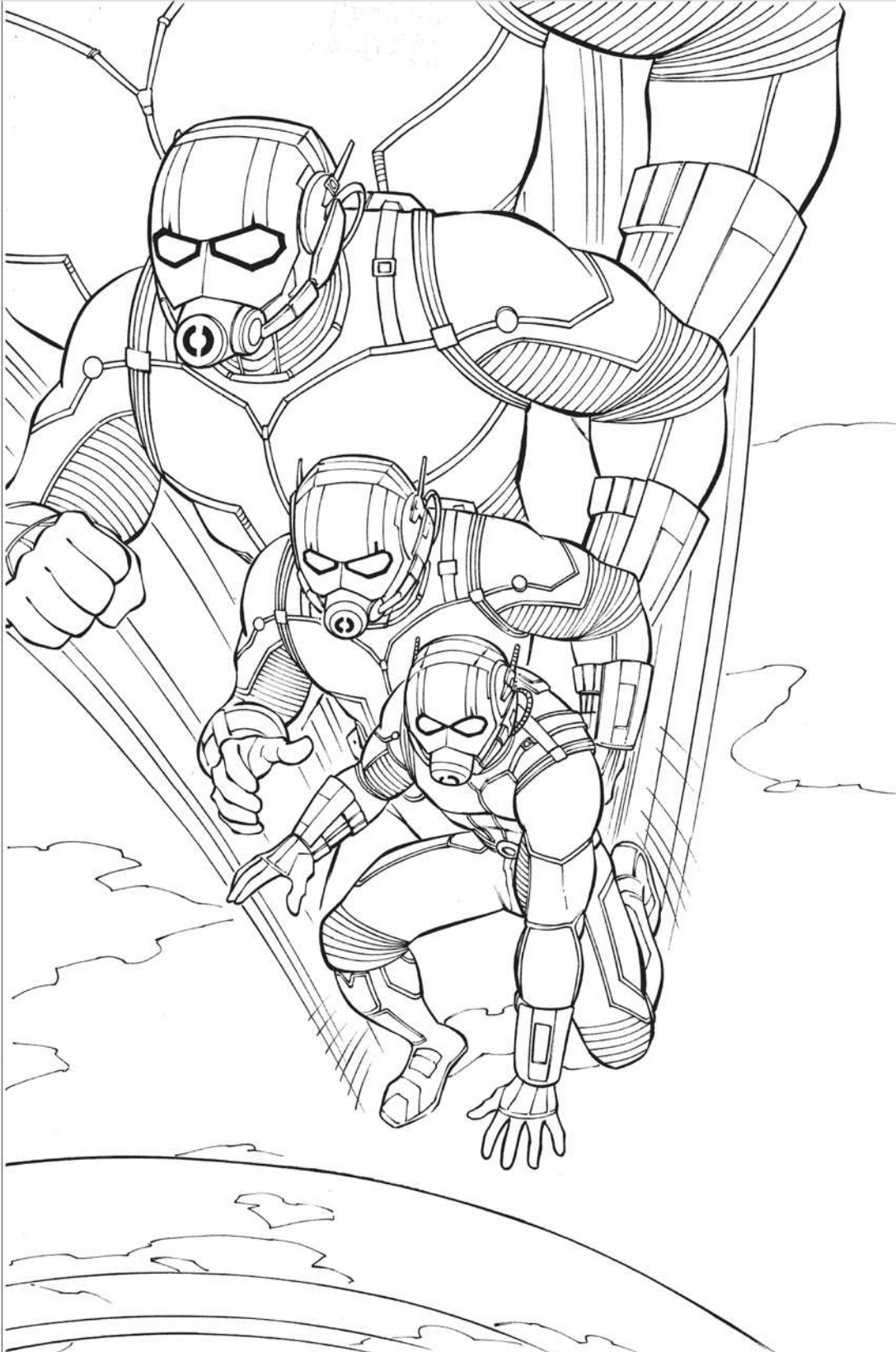
MARVEL

# ANT-MAN

© 2015 MARVEL



IN THEATERS JULY 17



PG-13

COLORING ACTIVITY

© 2015 MARVEL

MARVEL

# ANT-MAN

© 2015 MARVEL MARVEL



IN THEATERS JULY 17



PG-13

COLORING ACTIVITY

© 2015 MARVEL MARVEL

MARVEL

# ANT-MAN

© 2015 MARVEL MARVEL



IN THEATERS JULY 17



PG-13

COLORING ACTIVITY

© 2015 MARVEL MARVEL

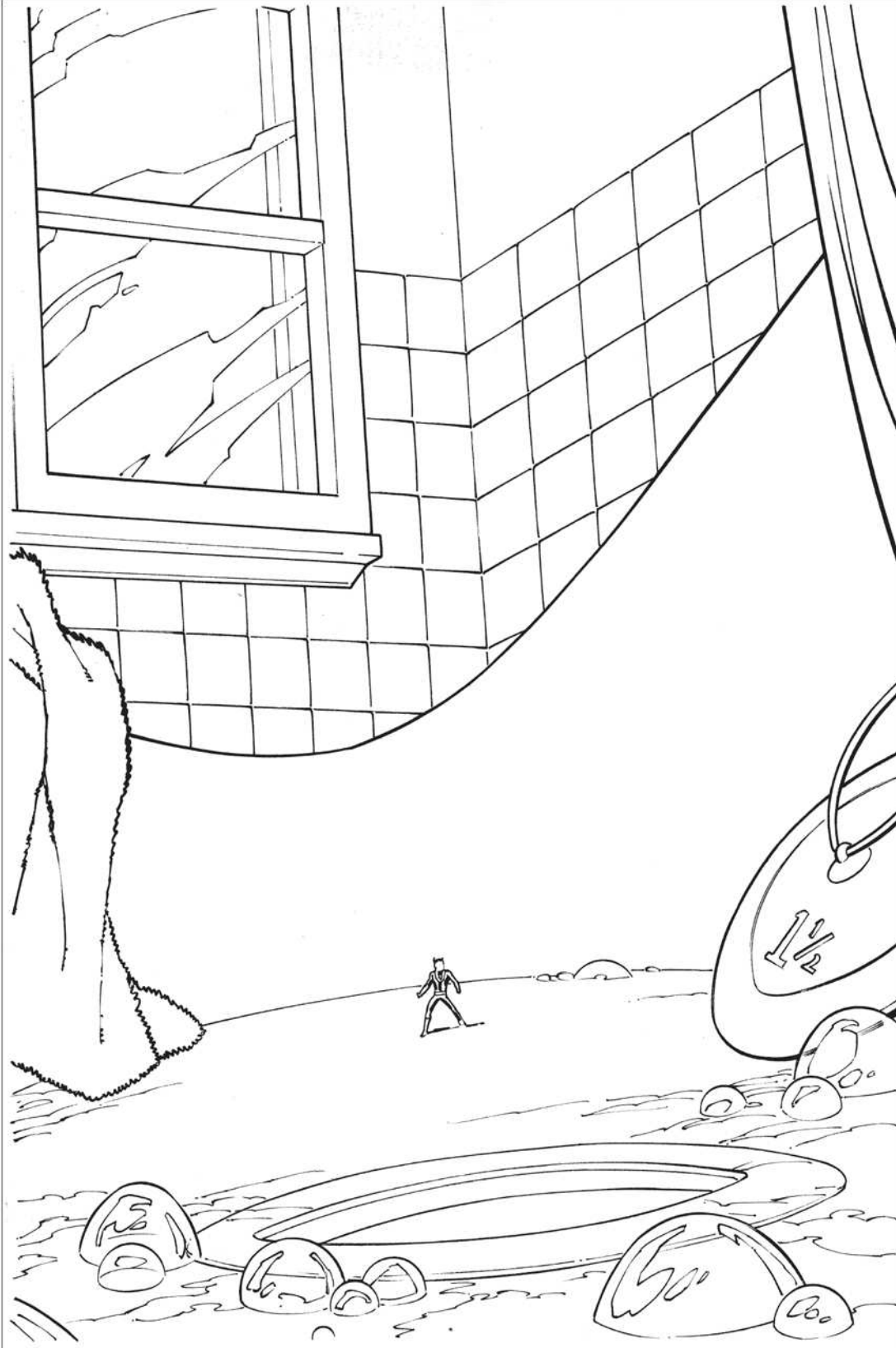
MARVEL

# ANT-MAN

© 2015 MARVEL



IN THEATERS JULY 17



PG-13

SPOT THE DIFFERENCE

© 2015 MARVEL

MARVEL

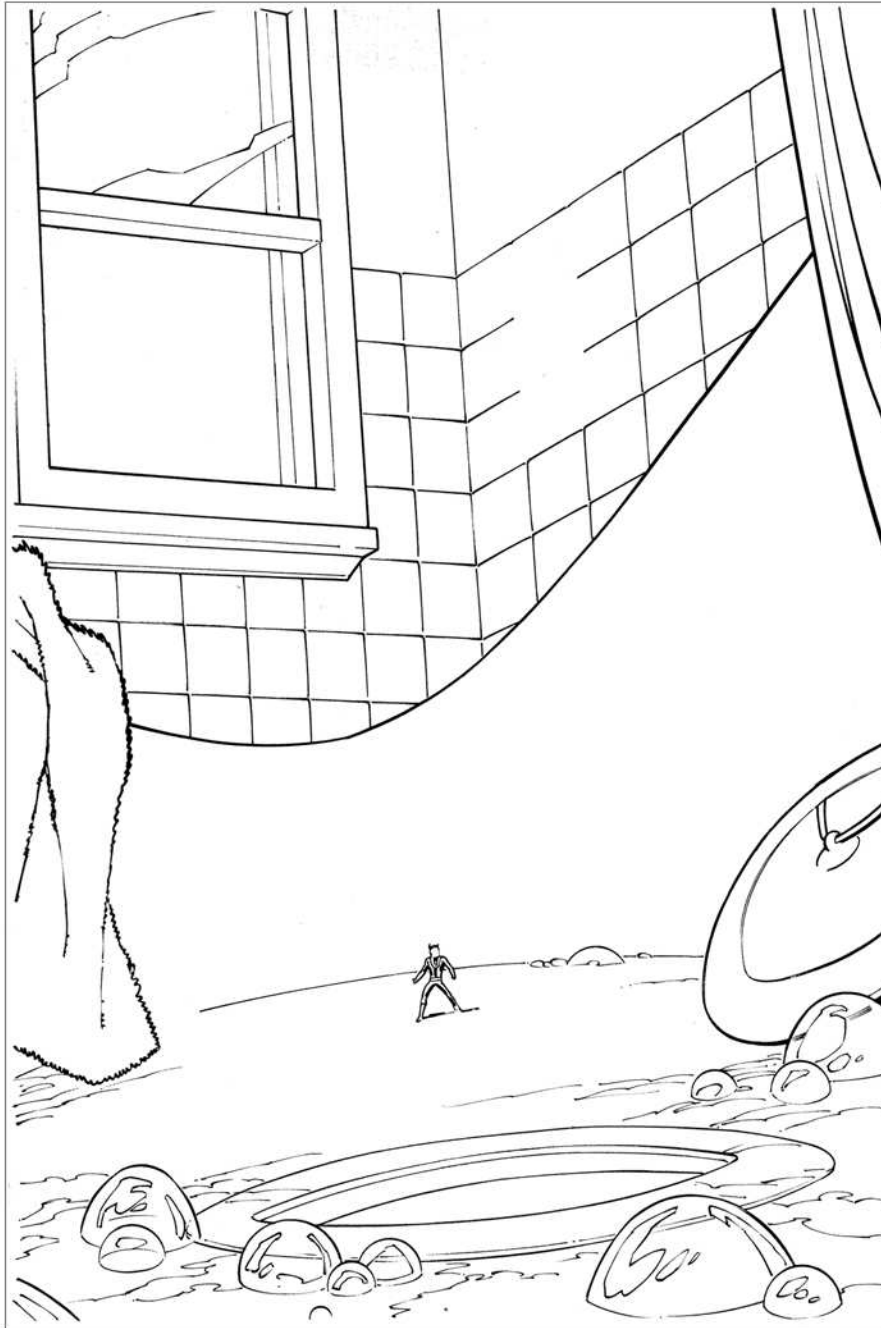
# ANT-MAN

© 2015 MARVEL MARVEL



IN THEATERS JULY 17

Can you spot five things on this page that are different from the last page? Circle them.



ANSWERS ON THE LAST PAGE

PG-13

SPOT THE DIFFERENCE

© 2015 MARVEL MARVEL

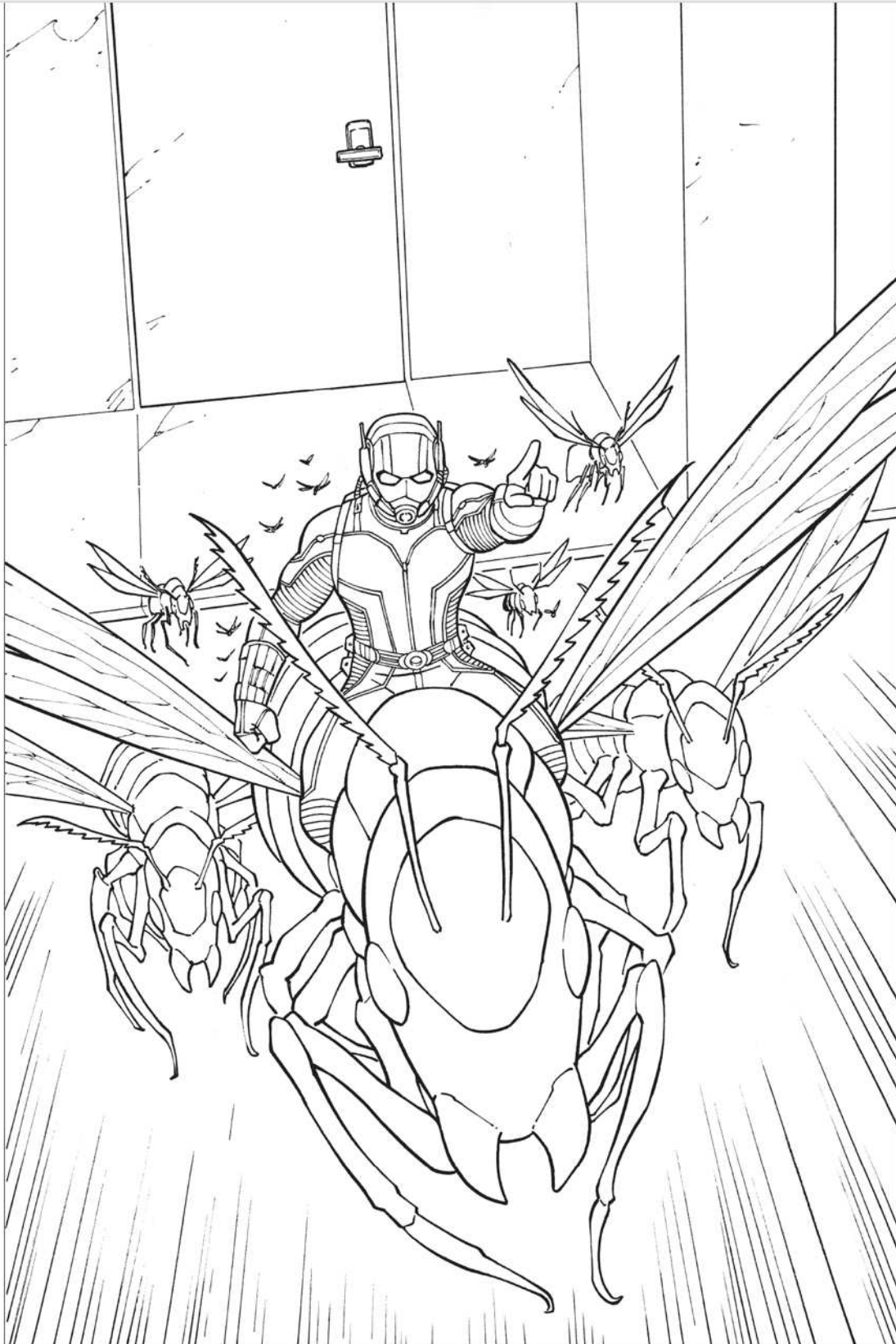
MARVEL

# ANT-MAN

© 2015 MARVEL MARVEL



IN THEATERS JULY 17



PG-13

SPOT THE DIFFERENCE

© 2015 MARVEL MARVEL

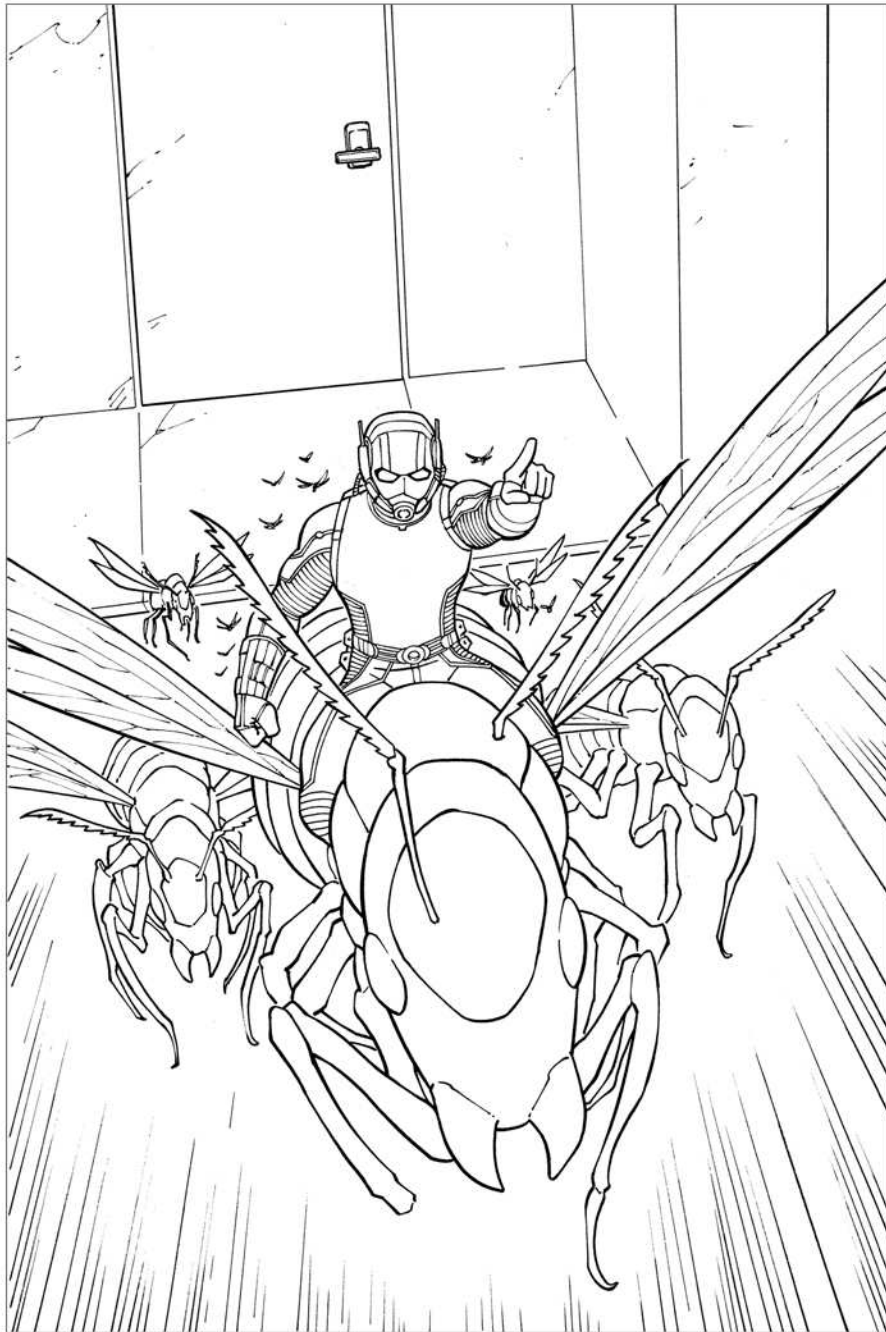
MARVEL  
**ANT-MAN**

© 2015 MARVEL MARVEL



IN THEATERS JULY 17

Can you spot five things on this page that are different from the last page? Circle them.



ANSWERS ON THE LAST PAGE

PG-13

SPOT THE DIFFERENCE

© 2015 MARVEL MARVEL

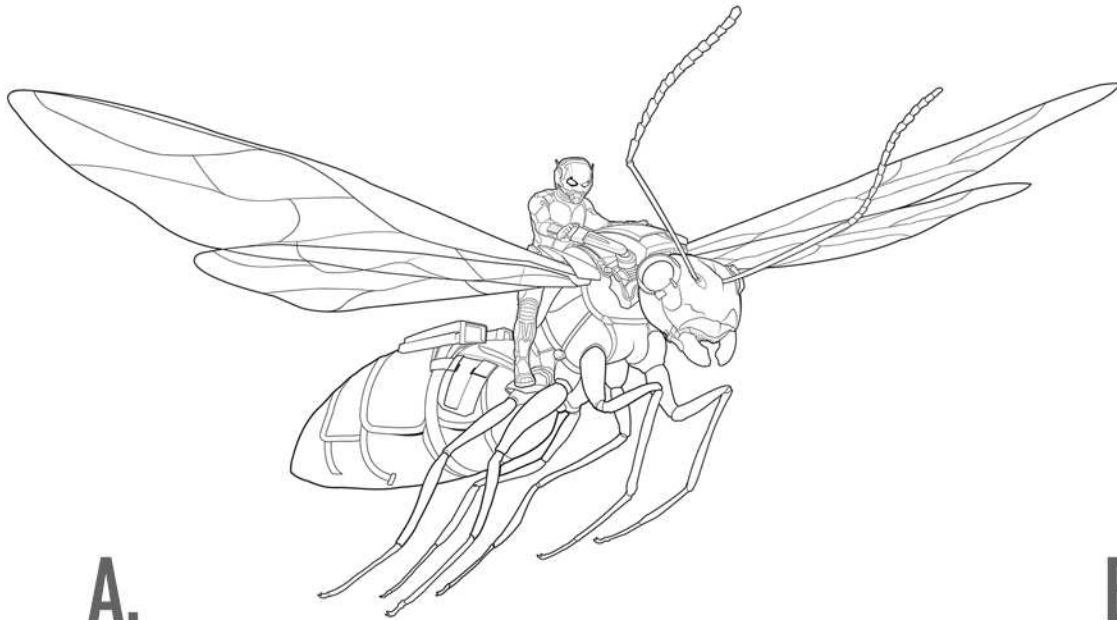
# MARVEL ANT-MAN

© 2015 MARVEL MARVEL



## IN THEATERS JULY 17

Which one is the matching shadow?



A.

B.



C.

D.



THE ANSWER IS C



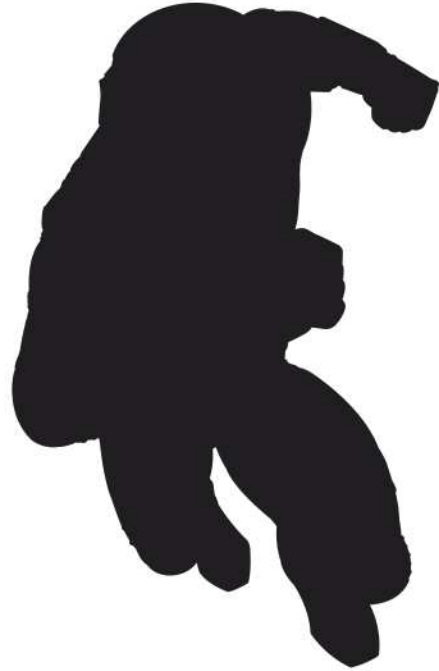
MARVEL  
**ANT-MAN**

© 2015 MARVEL MARVEL



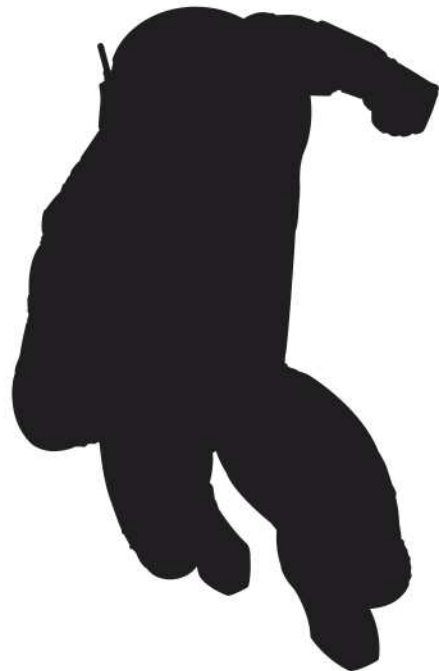
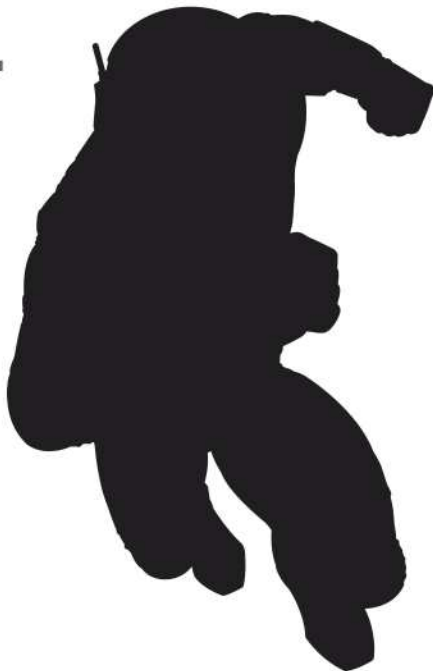
IN THEATERS JULY 17

Which one is the matching shadow?



A.

B.



C.

THE ANSWER IS B

# MARVEL ANT-MAN

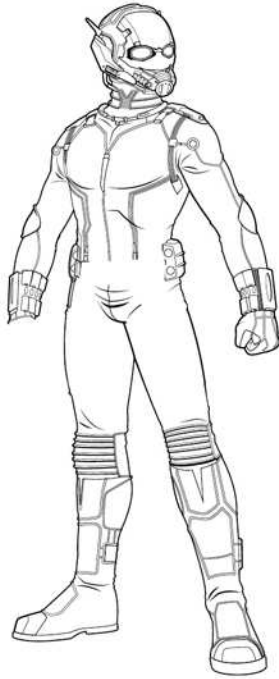
© 2015 MARVEL MARVEL



## IN THEATERS JULY 17

Which two images are exactly the same?

A.



B.



C.



D.



THE ANSWER IS B AND C

PG-13

### SPOT THE DIFFERENCE

© 2015 MARVEL MARVEL

# MARVEL ANT-MAN

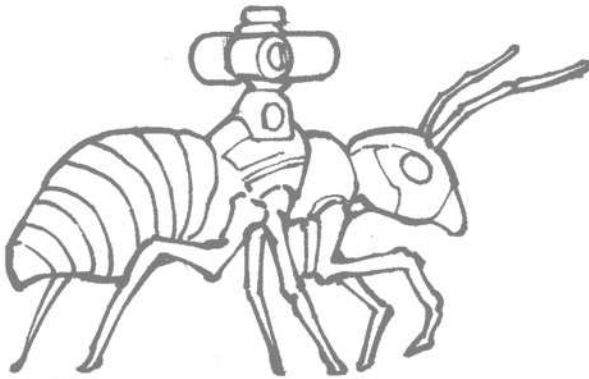
© 2015 MARVEL MARVEL



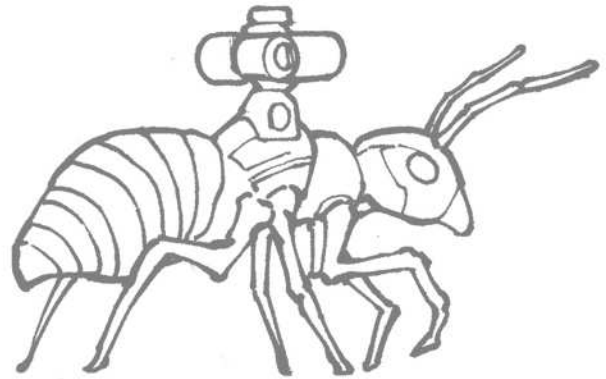
## IN THEATERS JULY 17

Which ant is not like the others?

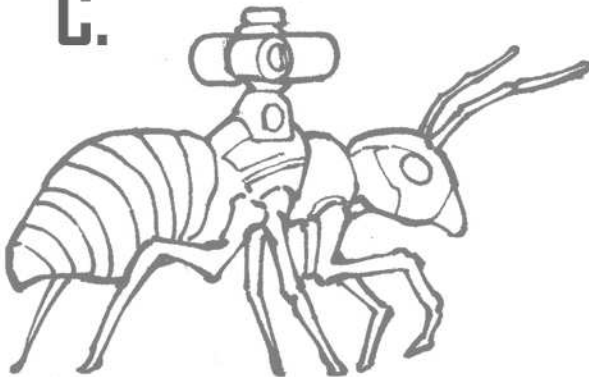
A.



B.



C.



D.



THE ANSWER IS D

PG-13

### SPOT THE DIFFERENCE

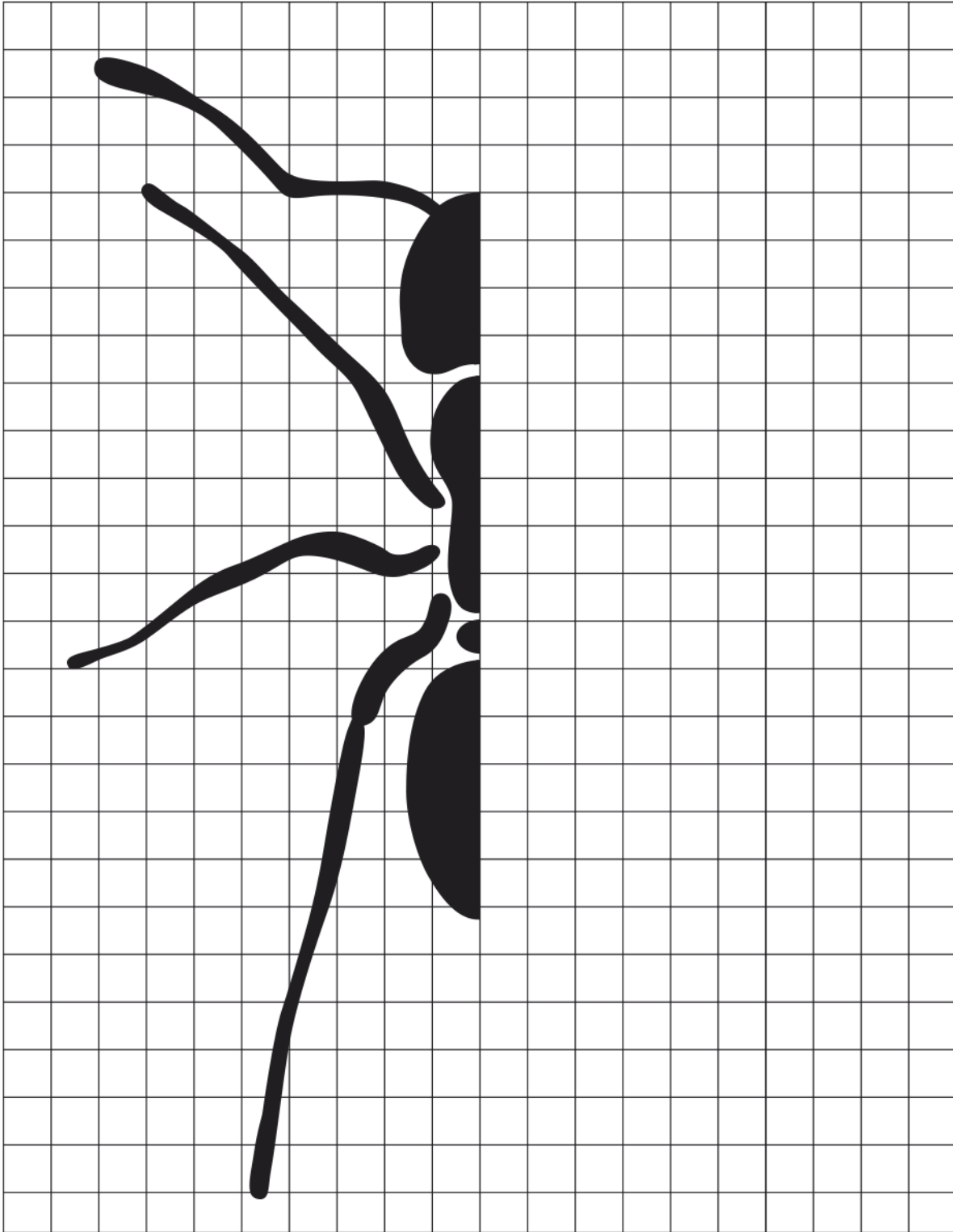
© 2015 MARVEL MARVEL

MARVEL  
**ANT-MAN**

© 2015 MARVEL MARVEL



IN THEATERS JULY 17



PG-13

DRAW THE ANT

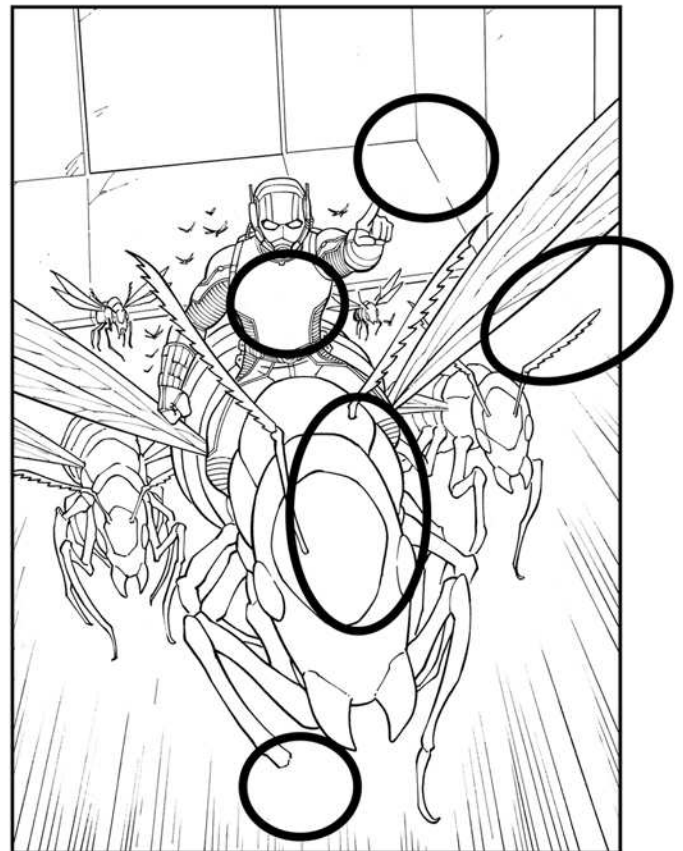
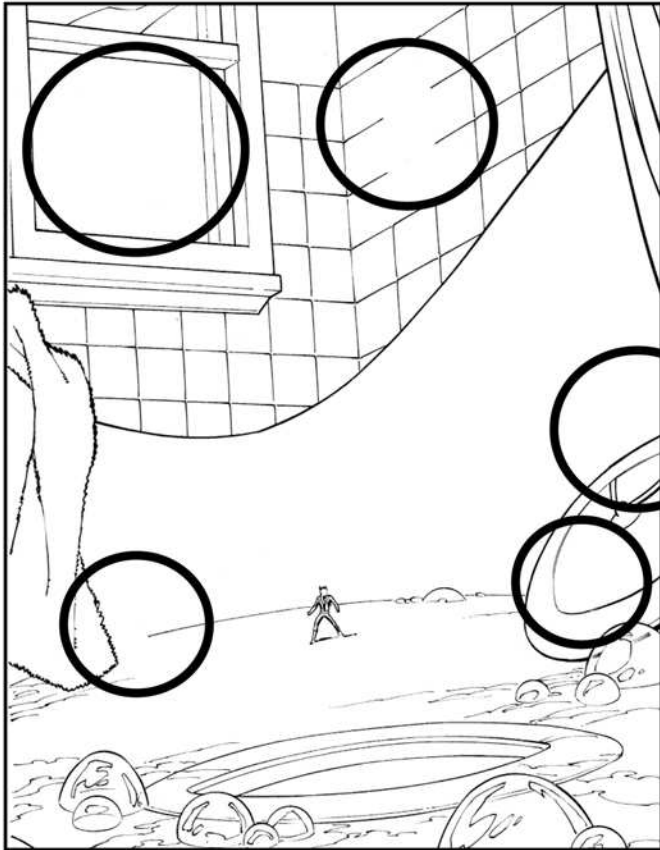
© 2015 MARVEL MARVEL

# MARVEL ANT-MAN

© 2015 MARVEL



## IN THEATERS JULY 17



PG-13

### SPOT THE DIFFERENCE ANSWERS

© 2015 MARVEL